



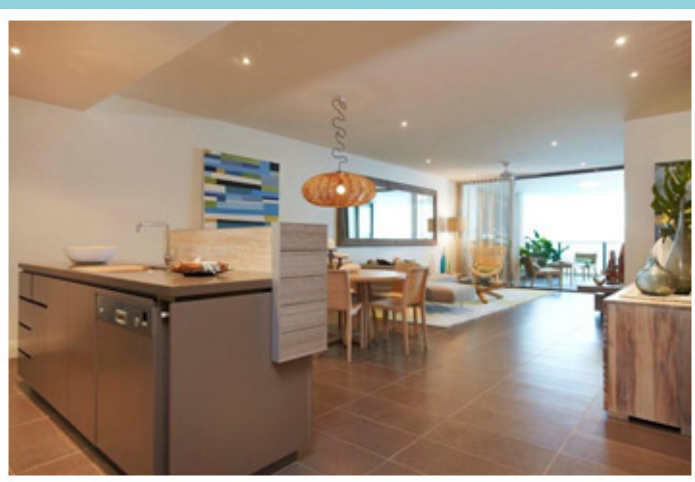
Welcome to the second edition of Mon Komo News. As you have previously enquired about this landmark development, we are pleased to keep you updated on the progress of Brisbane's luxury seaside secret...

# BREAKING GROUND ON A GROUND-BREAKING DEVELOPMENT!

**IN THIS ISSUE:**  
Construction of Mon Komo begins  
2 Year 5% Income Guarantee A Success!  
Mon Komo showcase at Brisbane Home Show

Mid June saw the beginning of **construction** of one of the most **dynamic projects** in **South East Queensland**. This comes at a time when many major developments have been put on hold due to the financial crisis, creating a wealth of employment in Redcliffe and the greater Brisbane area. The building is being constructed by multi-award winning St Hilliers Contracting ([www.sthilliers.com.au](http://www.sthilliers.com.au)). As you can see from the adjacent photo, earthworks are well underway with the basement area excavations due for completion in August!

Construction begins! June 2009



## Mon Komo Investment Apartments

The **2 YEAR 5% PER ANNUM LEASEBACK** on our **Mon Komo Investment Apartments** has stirred interest among buyers who have moved to secure prime Brisbane real estate with guaranteed income upon settlement. Purchasing now at today's prices with settlement not until early-2011 will coincide that year with completion of the Houghton Highway Duplication Project, making Redcliffe even more accessible from Brisbane's CBD and Brisbane Airport. **To find out more about our 2 year 5% leaseback, [click here](#).**

## Mon Komo @ Brisbane Home Show

Our display at the Brisbane Home Buyers Show on 13<sup>th</sup> and 14<sup>th</sup> June gave many inquisitive Brisbane residents a sample of the Mon Komo lifestyle and an opportunity to learn more about the development. The Home Show has generated a significant amount of enquiries and we are pleased to welcome some new Brisbane-based buyers.



## Coming Soon: Mon Komo Investment Seminars

Property is a tool used by many of the world's richest individuals and companies to minimise tax and generate wealth. Coming soon in July we will be hosting specific property investment information events "**Investing during uncertain times**". At these events a panel of experienced and successful property investors will provide you with useful tools and insights to achieving success with your property investments.

Our Sales Display Centre is open daily 10am-4pm or feel free to call us anytime on **1300 423 003**.

Kind regards,  
**Caroline Humbert**  
0413 944 399  
**Romile John** 0433 760 733  
**Robyn Frohlich** 0439 390 309

**Tel: 1300 423 003**  
**email: [monkomo@totalprojectmarketing.com.au](mailto:monkomo@totalprojectmarketing.com.au)**  
**Visit our Sales Display Centre**  
**Open Daily 10am to 4pm**  
Corner Anzac Ave & Sutton Street Redcliffe QLD

[www.totalprojectmarketing.com.au](http://www.totalprojectmarketing.com.au)

